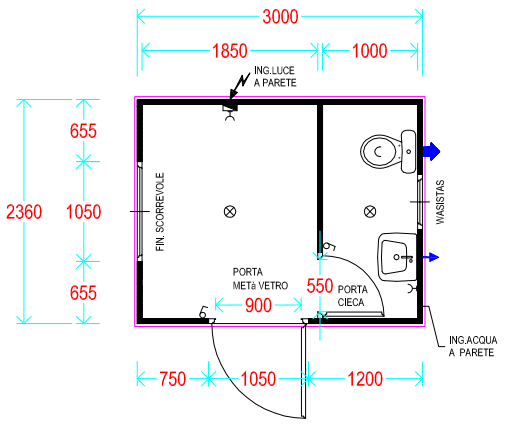


=BASIC-ss=

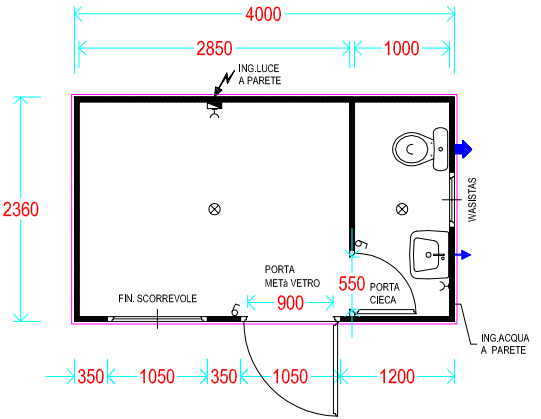
Alt. Int. mm. 2.200 (est. 2.420)
 Alt. Int. mm. 2.400 (est. 2.620)
 Alt. Int. mm. 2.700 (est. 2.920)

BASIC=3023ss



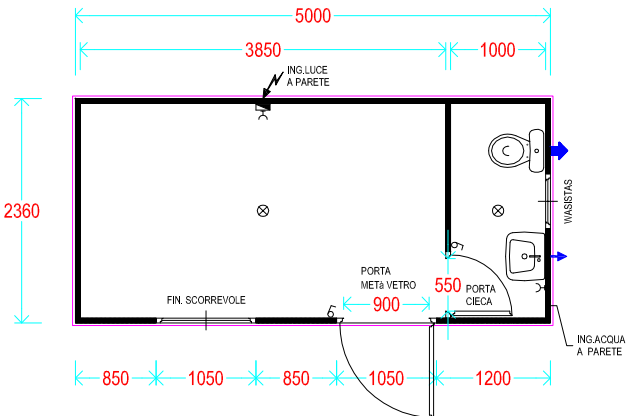
Alt. Int. mm. 2.200 (est. 2.420)
 Alt. Int. mm. 2.400 (est. 2.620)
 Alt. Int. mm. 2.700 (est. 2.920)

BASIC=4023ss



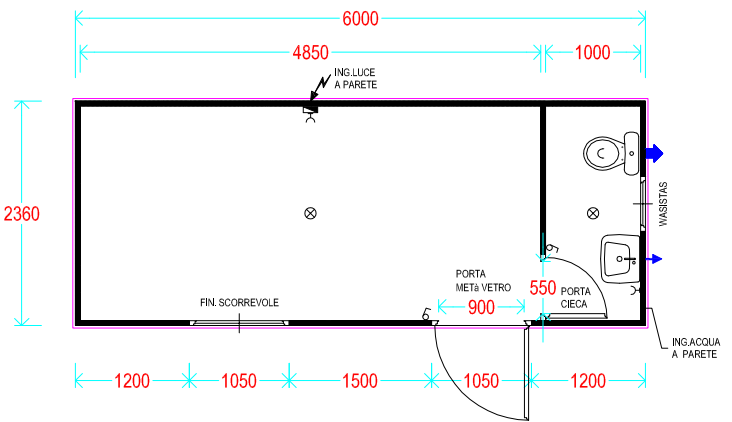
Alt. Int. mm. 2.200 (est. 2.420)
 Alt. Int. mm. 2.400 (est. 2.620)
 Alt. Int. mm. 2.700 (est. 2.920)

BASIC=5023ss



Alt. Int. mm. 2.200 (est. 2.420)
 Alt. Int. mm. 2.400 (est. 2.620)
 Alt. Int. mm. 2.700 (est. 2.920)

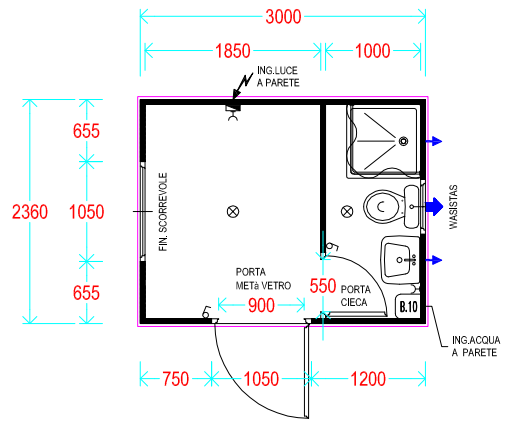
BASIC=6023ss



=BASIC-sc=

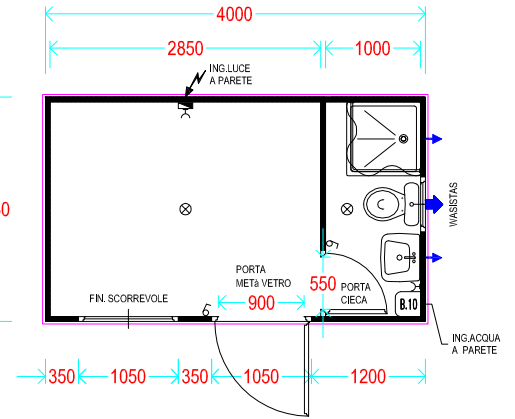
- Alt. Int. mm. 2.200 (est. 2.462)
- Alt. Int. mm. 2.400 (est. 2.662)
- Alt. Int. mm. 2.700 (est. 2.962)

BASIC=3023sc



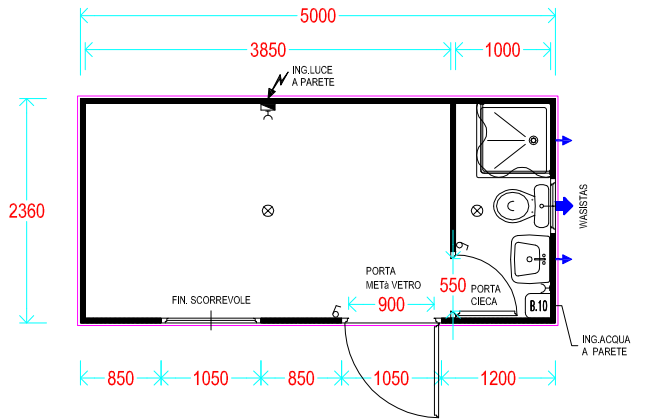
- Alt. Int. mm. 2.200 (est. 2.462)
- Alt. Int. mm. 2.400 (est. 2.662)
- Alt. Int. mm. 2.700 (est. 2.962)

BASIC=4023sc



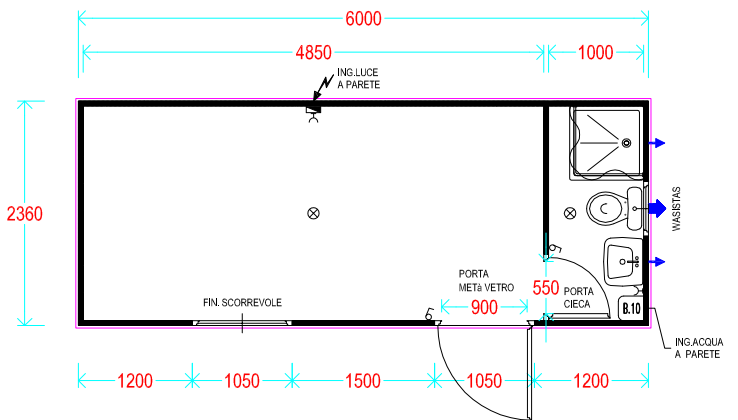
- Alt. Int. mm. 2.200 (est. 2.462)
- Alt. Int. mm. 2.400 (est. 2.662)
- Alt. Int. mm. 2.700 (est. 2.962)

BASIC=5023sc



- Alt. Int. mm. 2.200 (est. 2.462)
- Alt. Int. mm. 2.400 (est. 2.662)
- Alt. Int. mm. 2.700 (est. 2.962)

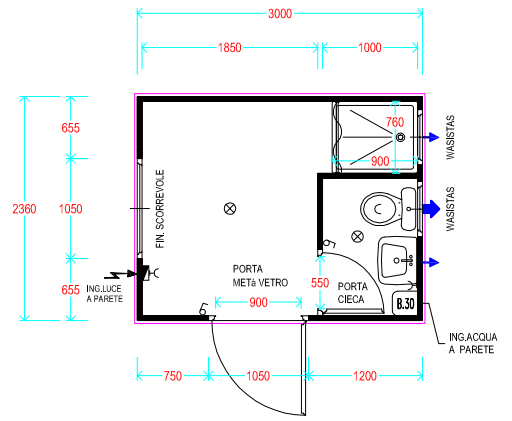
BASIC=6023sc



=BASIC-CN / SERIES=

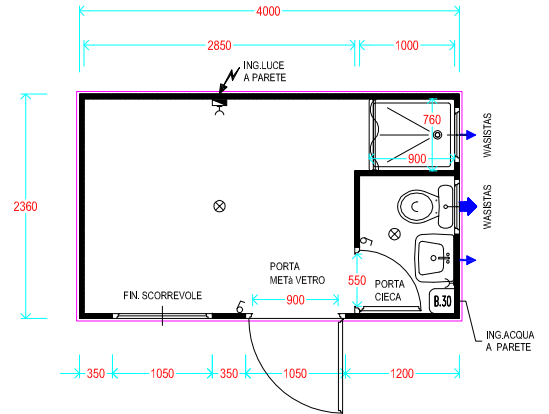
Alt. Int. mm. 2.200 (est. 2.462)
 Alt. Int. mm. 2.400 (est. 2.662)
 Alt. Int. mm. 2.700 (est. 2.962)

BASIC=3023-CN/1



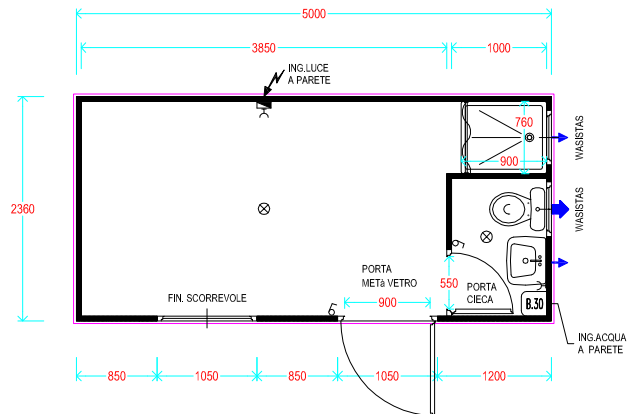
Alt. Int. mm. 2.200 (est. 2.462)
 Alt. Int. mm. 2.400 (est. 2.662)
 Alt. Int. mm. 2.700 (est. 2.962)

BASIC=4023-CN/2



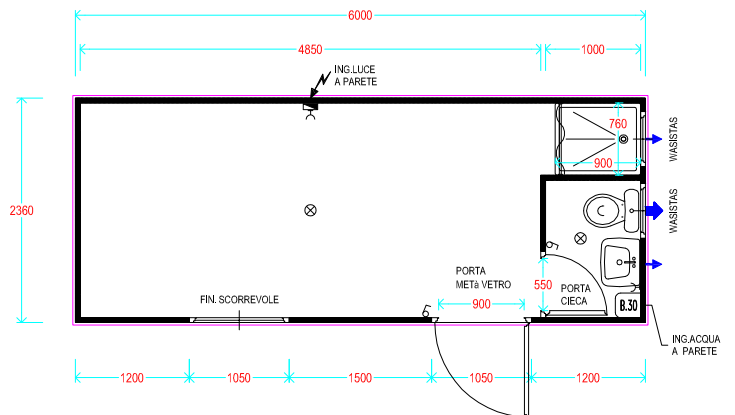
Alt. Int. mm. 2.200 (est. 2.462)
 Alt. Int. mm. 2.400 (est. 2.662)
 Alt. Int. mm. 2.700 (est. 2.962)

BASIC=5023-CN/3



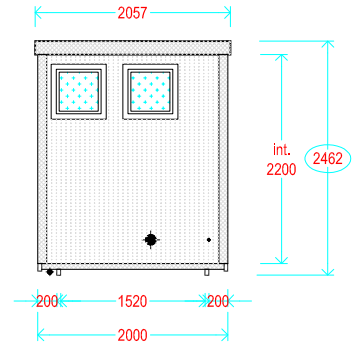
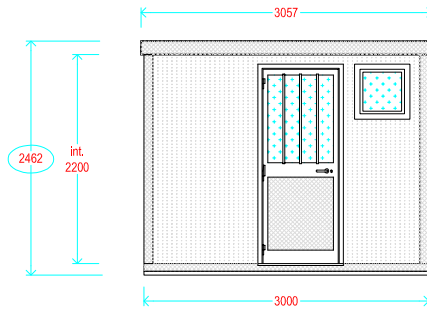
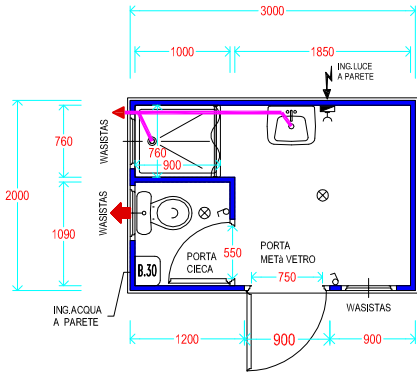
Alt. Int. mm. 2.200 (est. 2.462)
 Alt. Int. mm. 2.400 (est. 2.662)
 Alt. Int. mm. 2.700 (est. 2.962)

BASIC=6023-CN/4

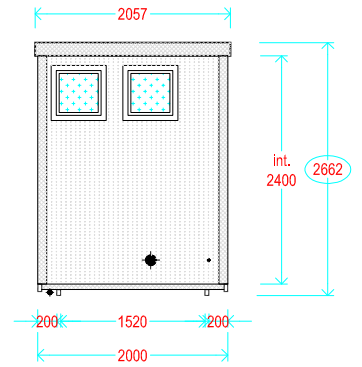
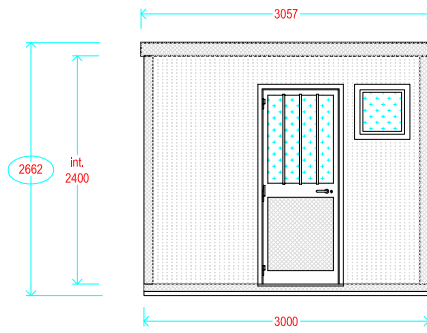
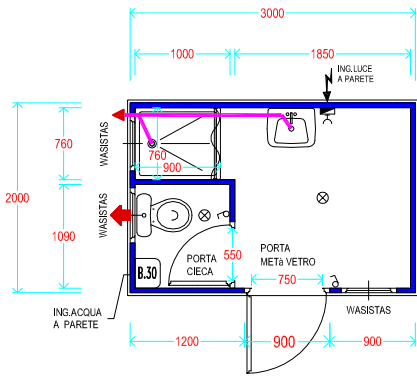


BASIC=3020-CN/0

ALTEZZA INTERNA 2200 (EST. 2462)



ALTEZZA INTERNA 2400 (EST. 2662)



ALTEZZA INTERNA 2700 (EST. 2962)

